


Raleigh

Porcelain Tile



Featured: Raleigh Ivory

 Stocked In The USA
2-3 week lead time

3 Colors | 1 Size | 1 Finish

Details

Size

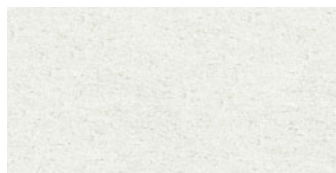


12" x 24"
5/16" Thickness
Matte
Pressed

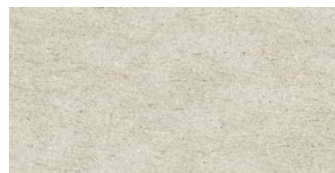
Installation Recommendations:

- For 12" x 24" pressed tiles: 1/8" grout joint and 33% offset pattern recommended.
- We recommend choosing a grout color that closely matches the tile.

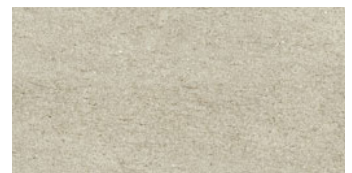
Colors



White



Ivory



Sand

Symbols



Floor & Wall



Residential



Commercial



Multi-Family



Matte



Pressed



Shade Variation

Packing

12" x 24"

Pcs/Box

9pcs

SF/Box

17.44 SF

Lbs/Box

64.46 Lbs

Raleigh (continued)



TECHNICAL INFORMATION

Dimensions | Surface flatness

Warpage Diagonal	ASTM C499	26.4 ± 0.5%
Warpage Edge	ASTM C499	23.6 ± 0.5%

Physical properties

Water Absorption	ASTM C373	≤ 0.5%
Breaking Strength	ASTM C648	≥ 275 lbf
Visible Abrasion Resistance	ASTM C1027	PEI (IV)
Thermal Shock Resistance	ASTM C484	Resistant
Crazing Resistance	ASTM C424	Resistant
Frost Resistance	ASTM C1026	Resistant
Dynamic Coefficient of Friction (DCOF)	ANSI A 137-1 Section 9,6	≥ 0.42

Chemical properties

Chemical Resistance	ASTM C650	Class A ¹ Resist
Stain Resistance	ASTM C1378	Class A

¹Avoid contact of the ceramic material with chemicals such as Muriatic Acid, Hydrofluoric Acid, Chlorine, Gasoline, Thinner, Diesel, cleaners that contain Potassium Hydroxide and other similar products, since the use of such substances can cause severe changes in the tile surface, altering its original appearance.